

12/20/2020 7:30 PM

TUBELITE, INC.

SERIES TU24000 STOREFRONT SYSTEM (NON-HVHZ)(NON-IMPACT)



3056 WALKER RIDGE DRIVE N.W.
WALKER, MICHIGAN 49544
PH: 800 866 2227 FX: 616 301 0008

GENERAL NOTES:

1. THE PRODUCT SHOWN HEREIN IS DESIGNED AND MANUFACTURED TO COMPLY WITH THE CURRENT FLORIDA BUILDING CODE (FBC), **EXCLUDING** HVHZ AND HAS BEEN EVALUATED ACCORDING TO THE FOLLOWING:
 - ASTM E 283-04(12)
 - ASTM E 331-00(09)
 - ASTM E 330-02
 - AAMA 501-15
2. ADEQUACY OF THE EXISTING STRUCTURAL CONCRETE/MASONRY, 2X FRAMING AND METAL STUD FRAMING AS A MAIN WIND FORCE RESISTING SYSTEM CAPABLE OF WITHSTANDING AND TRANSFERRING APPLIED PRODUCT LOADS TO THE FOUNDATION IS THE RESPONSIBILITY OF THE ENGINEER OR ARCHITECT OF RECORD FOR THE PROJECT OF INSTALLATION.
3. 1X AND 2X BUCKS (WHEN USED) SHALL BE DESIGNED AND ANCHORED TO PROPERLY TRANSFER ALL LOADS TO THE STRUCTURE. BUCK DESIGN AND INSTALLATION IS THE RESPONSIBILITY OF THE ENGINEER OR ARCHITECT OF RECORD FOR THE PROJECT OF INSTALLATION.
4. THE INSTALLATION DETAILS DESCRIBED HEREIN ARE GENERIC AND MAY NOT REFLECT ACTUAL CONDITIONS FOR A SPECIFIC SITE. IF SITE CONDITIONS CAUSE INSTALLATION TO DEVIATE FROM THE REQUIREMENTS DETAILED HEREIN, A LICENSED ENGINEER OR ARCHITECT SHALL PREPARE SITE SPECIFIC DOCUMENTS FOR USE WITH THIS DOCUMENT.
5. APPROVED IMPACT PROTECTIVE SYSTEM **IS REQUIRED** ON THIS PRODUCT IN AREAS REQUIRING IMPACT RESISTANCE.
6. FRAME MATERIAL: ALUMINUM 6063-T5 MINIMUM
7. ALL STRUCTURAL MATERIALS & DISSIMILAR METALS SHALL BE PROTECTED, TREATED, PAINTED, COATED, AND/OR ISOLATED AS REQUIRED IN THE APPLICABLE SECTIONS OF THE CURRENT FLORIDA BUILDING CODE AND REFERENCED DESIGN SPECIFICATIONS.
8. GLASS MEETS THE REQUIREMENTS OF ASTM E 1300 GLASS CHARTS. SEE SHEET 3 FOR GLAZING DETAILS.
9. GLASS SHALL BE SET WITH THE USE OF SETTING BLOCKS IN ACCORDANCE WITH CHAPTER 24 OF THE CURRENT FLORIDA BUILDING CODE.
10. GLAZING GASKETS SHALL MEET THE MINIMUM PERFORMANCE REQUIREMENTS AS APPLICABLE IN CHAPTER 24 OF THE FLORIDA BUILDING CODE.

| TABLE OF CONTENTS | |
|-------------------|---|
| SHEET | SHEET DESCRIPTION |
| 1 | GENERAL NOTES & TABLE OF CONTENTS |
| 2 | ELEVATIONS AND ANCHORS LAYOUT |
| 3 | GLAZING DETAILS AND DESIGN PRESSURE TABLE |
| 4 | HORIZONTAL DETAILS |
| 5 | VERTICAL DETAILS AND DESIGN PRESSURES |
| 6 | VERTICAL DETAILS AND DESIGN PRESSURES (CONT.) |
| 7 | CORNER DETAILS |
| 8 | DOOR DETAILS |
| 9 | DOOR DESIGN PRESSURE TABLES |
| 10 | DOOR DESIGN PRESSURE TABLES (CONT.) |
| 11 | ANCHOR DETAILS, SCHEDULE & INSTALLATION NOTES |

| MISSILE IMPACT RATING | DESIGN PRESSURE |
|-----------------------|--|
| NOT IMPACT RATED | SEE SHEETS 3, 5, 6, 9 & 10 FOR DESIGN PRESSURE LIMITATIONS. THE LOWEST APPLICABLE VALUE SHALL BE APPLIED TO THE ENTIRE SYSTEM. |

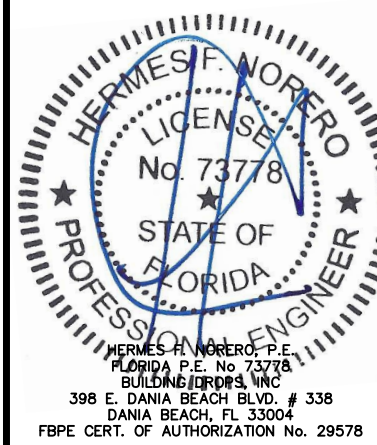
TITLE: SERIES TU24000 STOREFRONT SYSTEM (NON-HVHZ)(NON-IMPACT)

GENERAL NOTES & TABLE OF CONTENTS

PREPARED BY: BUILDING DROPS, INC.
398 E. DANIA BEACH BLVD., STE. 338
DANIA BEACH, FL 33004
PH: (954)399-8478
FAX: (954)744-4738
WEB: www.buildingdrops.com

| REMARKS | BY | DATE |
|---------|----|------|
| | | |
| | | |
| | | |

THE INSTALLATION DETAILS DESCRIBED HEREIN ARE GENERIC AND MAY NOT REFLECT ACTUAL CONDITIONS FOR A SPECIFIC SITE. IF SITE CONDITIONS CAUSE INSTALLATION TO DEVIATE FROM THE REQUIREMENTS DETAILED HEREIN, A LICENSED ENGINEER OR ARCHITECT SHALL PREPARE SITE SPECIFIC DOCUMENTS FOR USE WITH THIS DOCUMENT



FL #: **FL16539**

DATE: **09.29.20**

| | |
|--------------------|---------------------|
| DWG. BY: LL | CHK. BY: HFN |
|--------------------|---------------------|

SCALE: **NTS**

DWG. #: **TLI008**

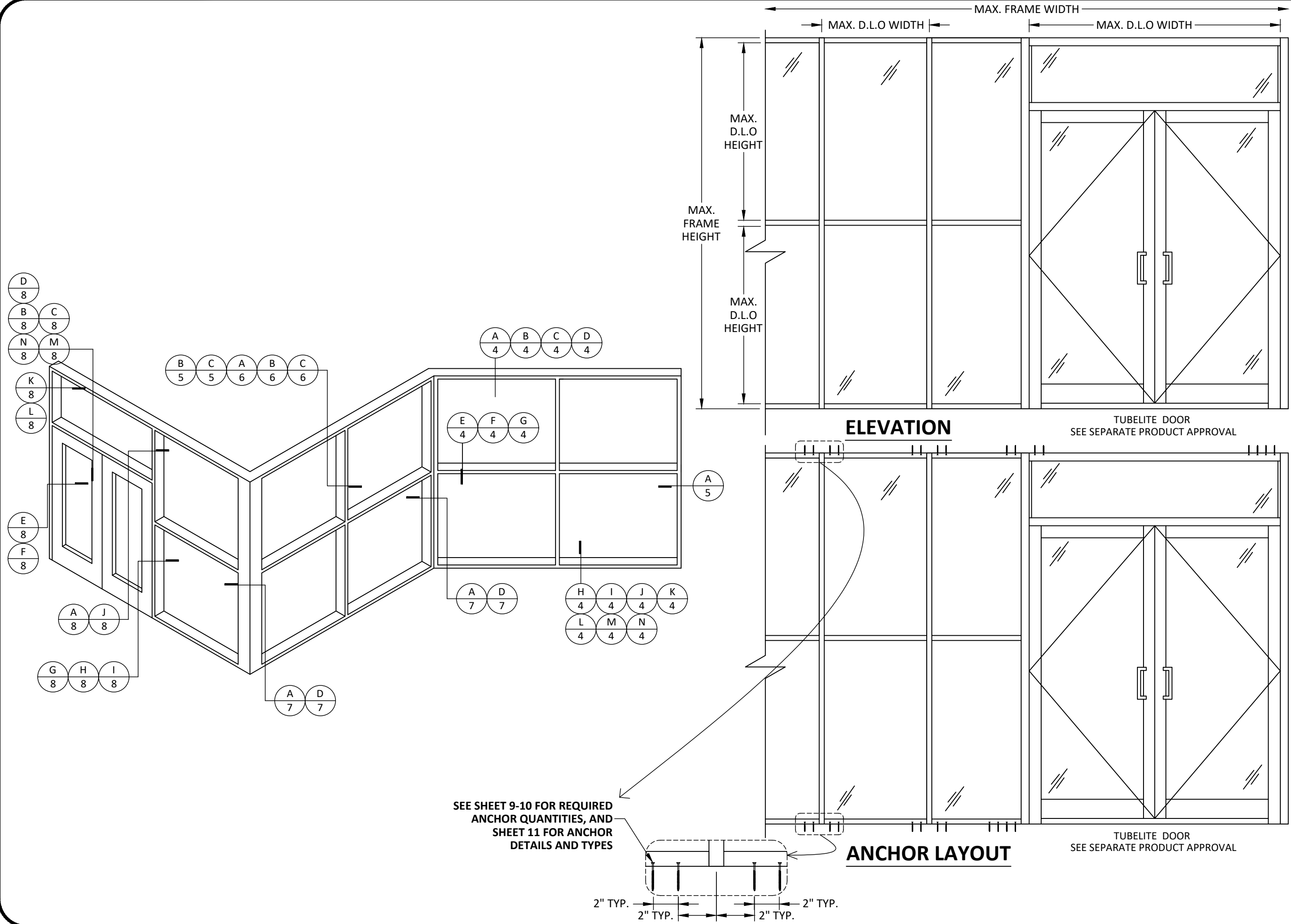
SECTION **1**

OF 11

c:\users\p50\onedrive - building drops, inc.\tl008 2020-12-20.dwg

12/20/2020 7:30 PM

c:\users\p50\onedrive - building drops, inc.\11008 2020-12-20.dwg



TUBELITE
 DEPENDABLE
 LEADERS IN ECO-EFFICIENT STOREFRONT,
 CURTAINWALL AND ENTRANCE SYSTEMS

3056 WALKER RIDGE DRIVE N.W.
 WALKER, MICHIGAN 49544
 PH: 800 866 2227 FX: 616 301 0008

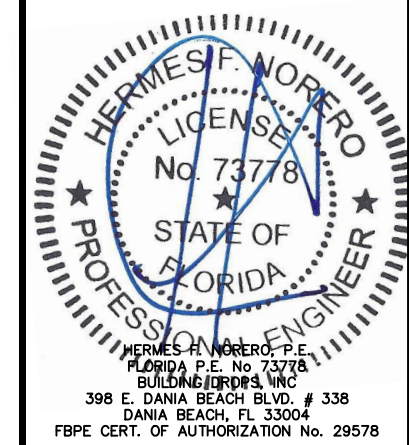
TITLE: **SERIES TU24000**
STOREFRONT SYSTEM
 (NON-HVHZ)/(NON-IMPACT)
 ELEVATIONS AND ANCHOR LAYOUT

PREPARED BY:
BUILDING DROPS, INC.
 398 E. DANIA BEACH BLVD., STE. 338
 DANIA BEACH, FL 33004
 PH: (954)399-8478
 FAX: (954)744-4738
 WEB: www.buildingdrops.com



| REMARKS | BY | DATE |
|---------|----|------|
| | | |
| | | |
| | | |

THE INSTALLATION DETAILS DESCRIBED HEREIN ARE GENERIC AND MAY NOT REFLECT ACTUAL CONDITIONS FOR A SPECIFIC SITE. IF SITE CONDITIONS CAUSE INSTALLATION TO DEVIATE FROM THE REQUIREMENTS DETAILED HEREIN, A LICENSED ENGINEER OR ARCHITECT SHALL PREPARE SITE SPECIFIC DOCUMENTS FOR USE WITH THIS DOCUMENT



| | |
|----------|-----------------|
| FL #: | FL16539 |
| DATE: | 09.29.20 |
| DWG. BY: | LL |
| CHK. BY: | HFN |
| SCALE: | NTS |
| DWG. #: | TL1008 |
| SECTION | 2 |

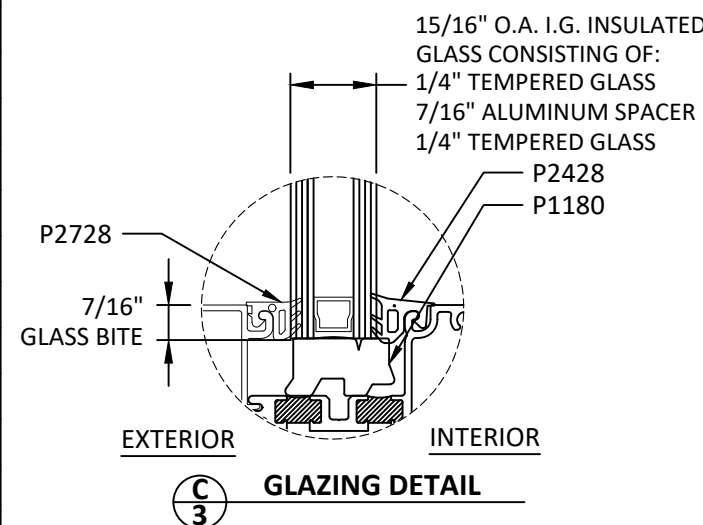
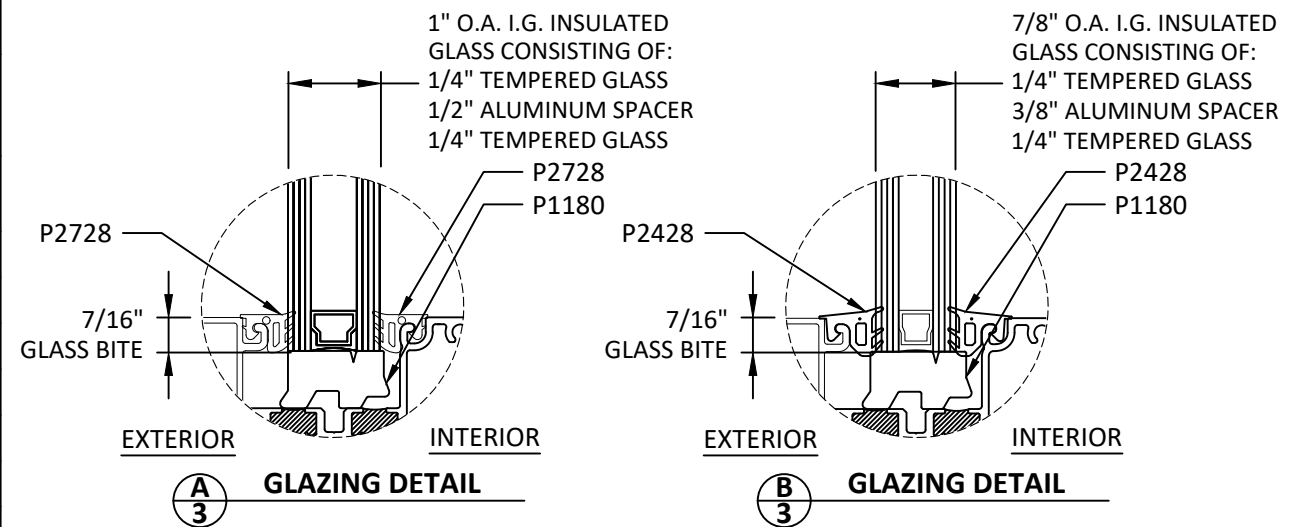
GLAZING DETAILS AND DESIGN PRESSURE TABLE

TUBELITE
DEPENDABLE
LEADERS IN ECO-EFFICIENT STOREFRONT,
CURTAINWALL AND ENTRANCE SYSTEMS

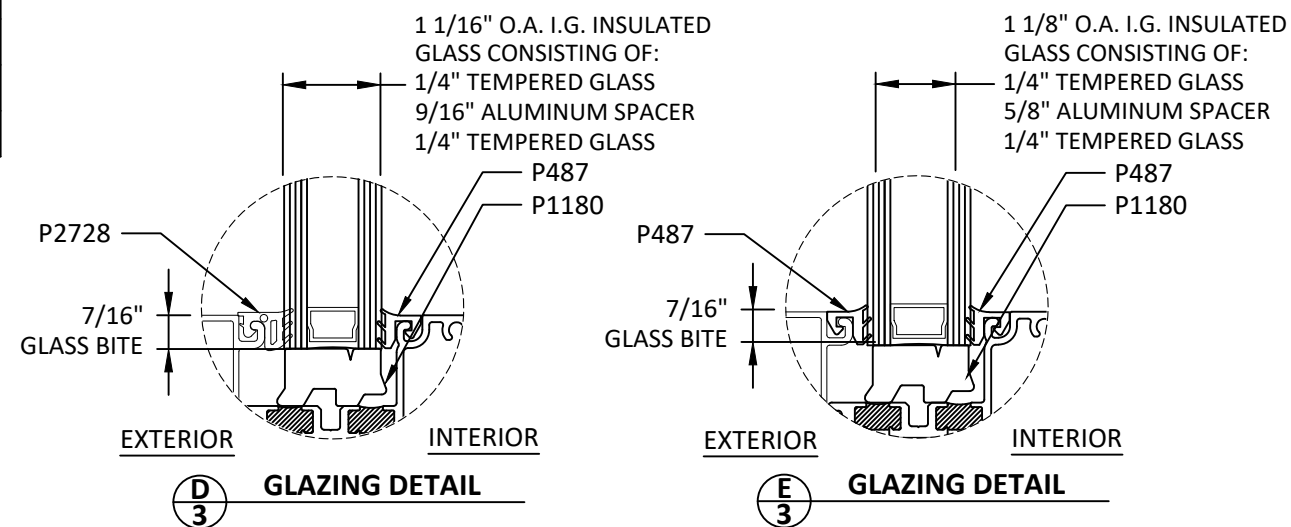
3056 WALKER RIDGE DRIVE N.W.
WALKER, MICHIGAN 49544
PH: 800 866 2227 FX: 616 301 0008

| DESIGN PRESSURE TABLE: GLAZING CAPACITY BY TYPE | | |
|--|--------------------|---------------------------|
| D.L.O. WIDTH (IN) | D.L.O. HEIGHT (IN) | DESIGN PRESSURE (+/- PSF) |
| | | TYPE 'A' |
| 26.125 | 86.125 | 45.0 |
| | 89.125 | 45.0 |
| | 92.125 | 45.0 |
| | 95.125 | 45.0 |
| | 98.125 | 45.0 |
| | 101.13 | 45.0 |
| | 104.13 | 45.0 |
| 29.125 | 86.125 | 43.9 |
| | 89.125 | 43.6 |
| | 92.125 | 43.4 |
| | 95.125 | 43.1 |
| | 98.125 | 42.9 |
| | 101.13 | 42.7 |
| | 104.13 | 42.5 |
| 32.125 | 86.125 | 40.7 |
| | 89.125 | 40.4 |
| | 92.125 | 40.1 |
| | 95.125 | 39.8 |
| | 98.125 | 39.6 |
| | 101.13 | 39.4 |
| | 104.13 | 39.1 |
| 35.125 | 86.125 | 38.0 |
| | 89.125 | 37.7 |
| | 92.125 | 37.4 |
| | 95.125 | 37.1 |
| | 98.125 | 36.9 |
| | 101.13 | 36.6 |
| | 104.13 | 36.4 |
| 38.125 | 86.125 | 35.8 |
| | 89.125 | 35.5 |
| | 92.125 | 35.2 |

| DESIGN PRESSURE TABLE: GLAZING CAPACITY BY TYPE | | | |
|--|--------------------|---------------------------|------|
| D.L.O. WIDTH (IN) | D.L.O. HEIGHT (IN) | DESIGN PRESSURE (+/- PSF) | |
| | | TYPE 'A' | |
| 38.125 | 95.125 | 34.9 | |
| | 98.125 | 34.6 | |
| | 101.13 | 34.4 | |
| | 104.13 | 34.1 | |
| | 41.125 | 86.125 | 34.0 |
| | | 89.125 | 33.6 |
| | | 92.125 | 33.3 |
| 95.125 | | 33.0 | |
| 98.125 | | 32.7 | |
| 101.13 | | 32.5 | |
| 104.13 | | 32.2 | |
| 44.125 | 86.125 | 32.0 | |
| | 89.125 | 32.0 | |
| | 92.125 | 31.7 | |
| | 95.125 | 31.4 | |
| | 98.125 | 31.1 | |
| | 101.13 | 30.8 | |
| | 104.13 | 30.8 | |
| 47.125 | 86.125 | 30.0 | |
| | 89.125 | 30.0 | |
| | 92.125 | 30.0 | |
| | 95.125 | 30.0 | |
| 50.125 | 86.125 | 28.2 | |
| | 89.125 | 28.2 | |
| 51.125 | 86.125 | 27.7 | |



- GLAZING NOTES:**
- GLASS TYPE COMPLIES WITH ASTM E1300 REQUIREMENTS AS WELL AS APPLICABLE SAFETY GLAZING REQUIREMENTS PER THE FBC. TEMPER AND SAFETY GLAZING REQUIREMENTS SHALL BE REVIEWED ON A SITE SPECIFIC BASIS.
 - SETTING BLOCK DUROMETER HARDNESS OF 70-90 (SHORE A) AS REFERENCED IN FBC CHAPTER 24.
 - TWO APPROVED SETTING BLOCKS SHALL BE USED FOR GLASS WIDER THAN 36" AS PER FBC CHAPTER 24.
 - D.L.O. AND DESIGN PRESSURES MAY NOT EXCEED MAX VALUES IN SIZE CHARTS.

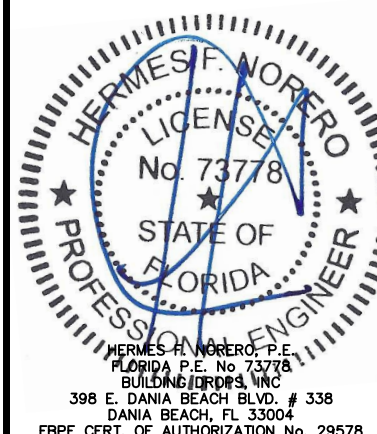


TITLE: SERIES TU24000
STOREFRONT SYSTEM
(NON-HVHZ)/(NON-IMPACT)
GLAZING DETAILS AND DESIGN
PRESSURE TABLE

PREPARED BY:
BUILDING DROPS, INC.
398 E. DANIA BEACH BLVD., STE. 338
DANIA BEACH, FL 33004
PH: (954)399-8478
FAX: (954)744-4738
WEB: www.buildingdrops.com

| REMARKS | BY | DATE |
|---------|----|------|
| | | |
| | | |
| | | |

THE INSTALLATION DETAILS DESCRIBED HEREIN ARE GENERIC AND MAY NOT REFLECT ACTUAL CONDITIONS FOR A SPECIFIC SITE. IF SITE CONDITIONS CAUSE INSTALLATION TO DEVIATE FROM THE REQUIREMENTS DETAILED HEREIN, A LICENSED ENGINEER OR ARCHITECT SHALL PREPARE SITE SPECIFIC DOCUMENTS FOR USE WITH THIS DOCUMENT



FL #: **FL16539**

DATE: **09.29.20**

DWG. BY: **LL** | CHK. BY: **HFN**

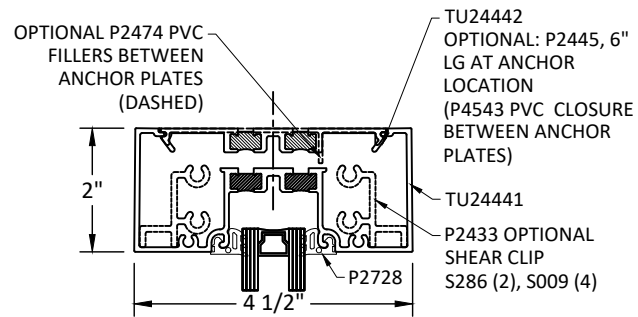
SCALE: **NTS**

DWG. #: **TLI008**

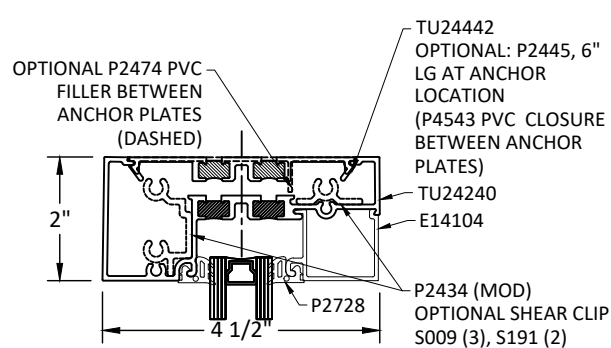
SECTION: **3**

OF 11

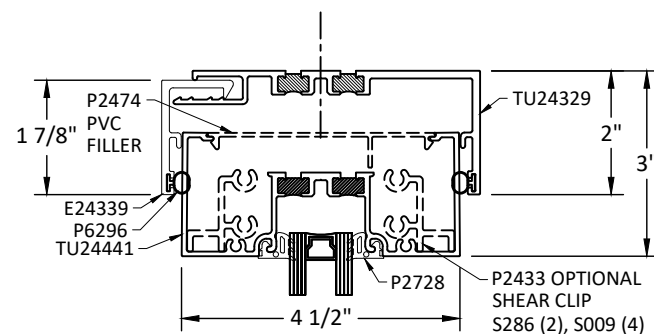
HORIZONTAL DETAILS



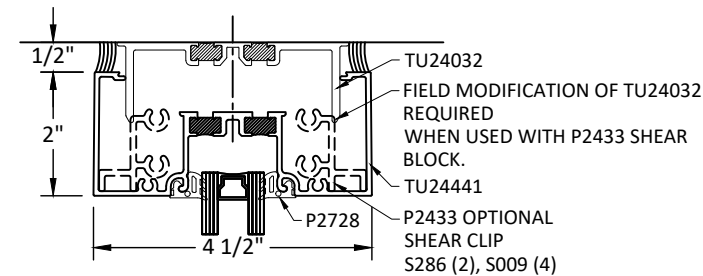
A
4
HEAD
STANDARD HEAD



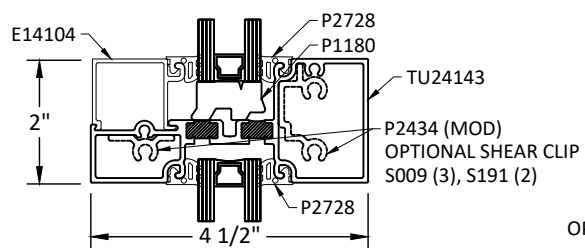
B
4
HORIZONTAL
STANDARD HEAD



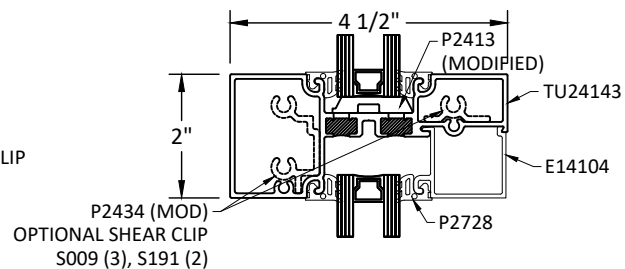
C
4
HEAD
OPTIONAL HEAD



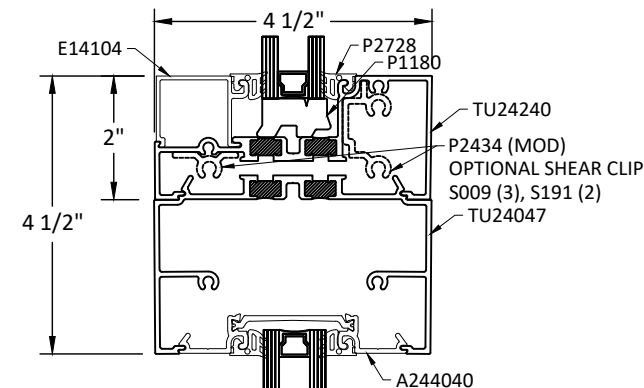
D
4
HEAD
HEAD OPTIONAL



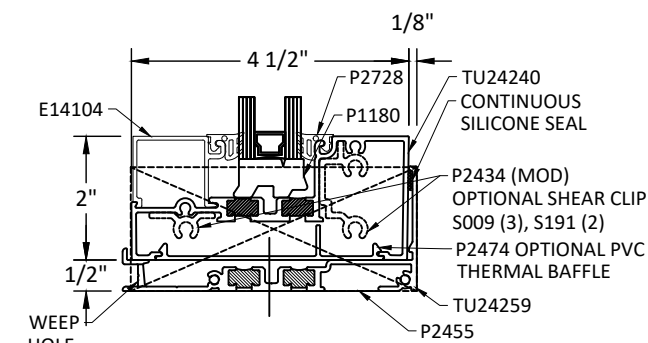
E
4
HORIZONTAL
STANDARD HORIZONTAL



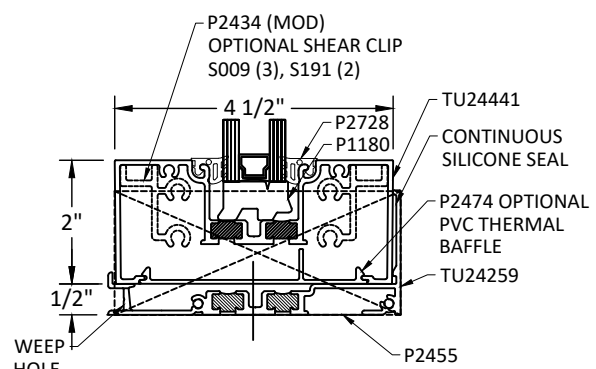
F
4
HORIZONTAL
STANDARD HORIZONTAL



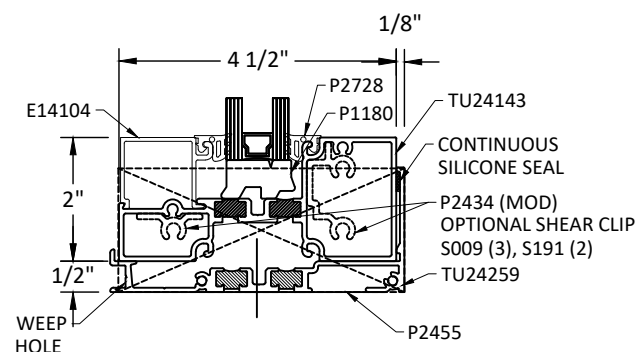
G
4
HORIZONTAL
OPTIONAL



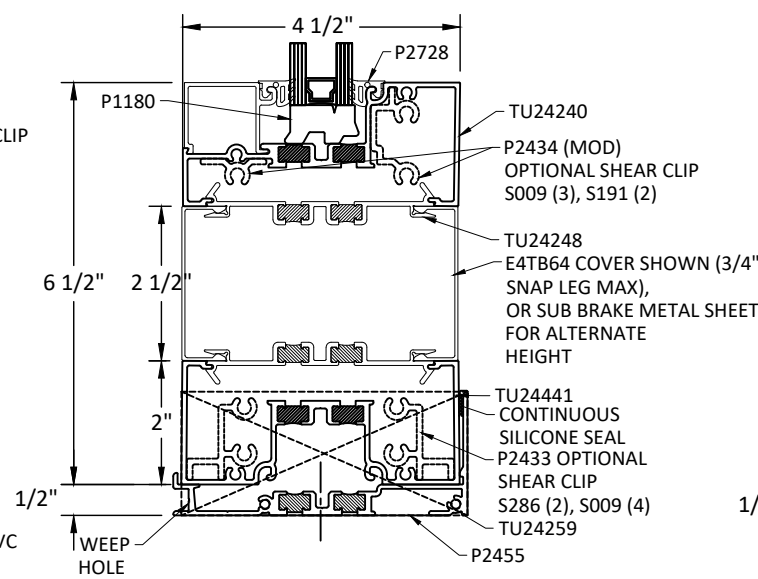
H
4
SILL
STANDARD



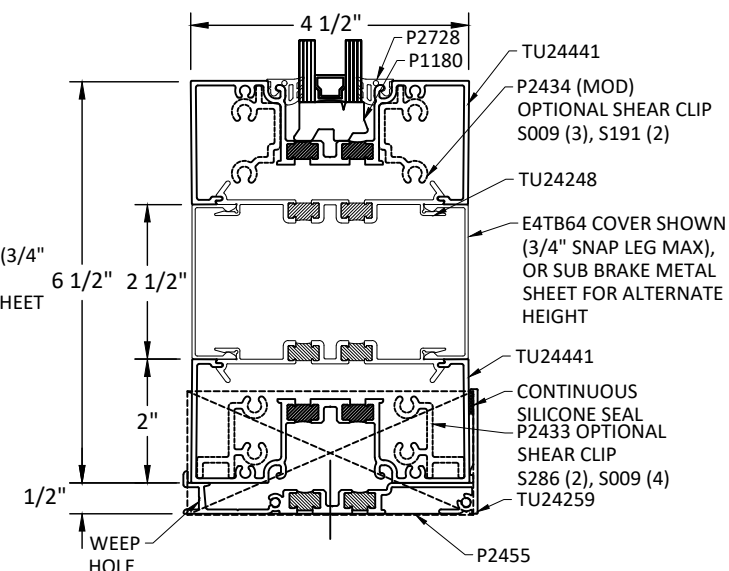
I
4
SILL
STANDARD



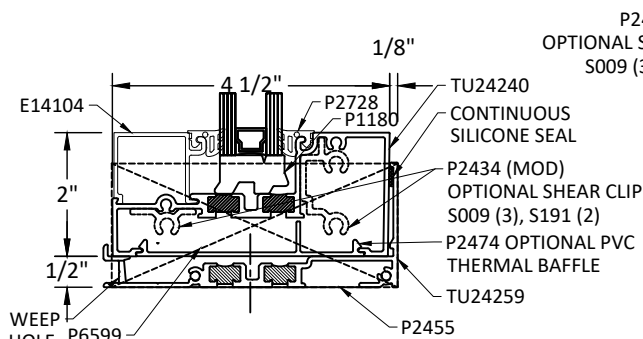
J
4
SILL
OPTIONAL



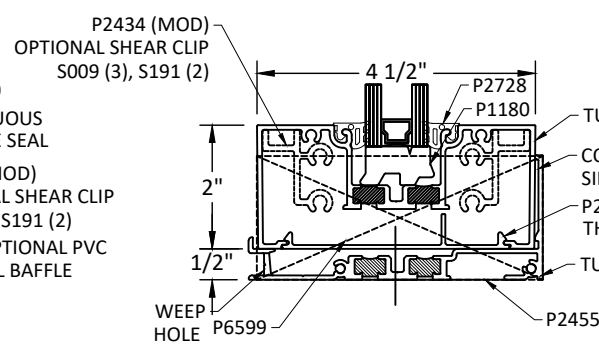
M
4
SILL
OPTIONAL



N
4
SILL
OPTIONAL



K
4
SILL
OPTIONAL



L
4
SILL
OPTIONAL

TUBELITE
DEPENDABLE

LEADERS IN ECO-EFFICIENT STOREFRONT, CURTAINWALL AND ENTRANCE SYSTEMS

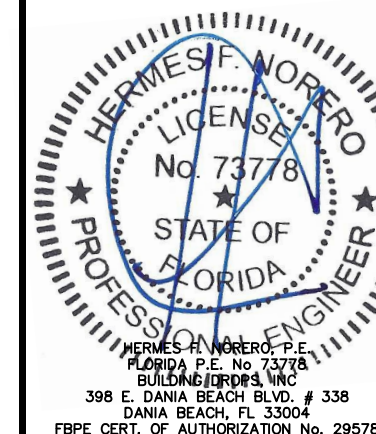
3056 WALKER RIDGE DRIVE N.W.
WALKER, MICHIGAN 49544
PH: 800 866 2227 FX: 616 301 0008

TITLE: SERIES TU24000
STOREFRONT SYSTEM
(NON-HVHZ)/(NON-IMPACT)
HORIZONTAL DETAILS

PREPARED BY: BUILDING DROPS, INC.
398 E. DANIA BEACH BLVD., STE. 338
DANIA BEACH, FL 33004
PH: (954) 399-8478
FAX: (954) 744-4738
WEB: www.buildingdrops.com

| REMARKS | BY | DATE |
|---------|----|------|
| | | |
| | | |
| | | |

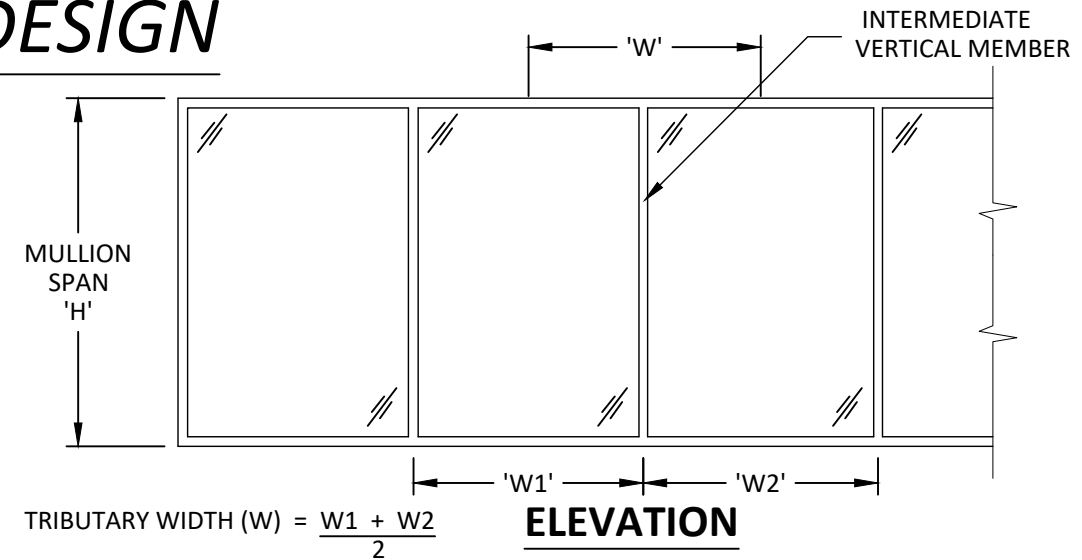
THE INSTALLATION DETAILS DESCRIBED HEREIN ARE GENERIC AND MAY NOT REFLECT ACTUAL CONDITIONS FOR A SPECIFIC SITE. IF SITE CONDITIONS CAUSE INSTALLATION TO DEVIATE FROM THE REQUIREMENTS DETAILED HEREIN, A LICENSED ENGINEER OR ARCHITECT SHALL PREPARE SITE SPECIFIC DOCUMENTS FOR USE WITH THIS DOCUMENT



FL #: **FL16539**
DATE: **09.29.20**
DWG. BY: **LL** | CHK. BY: **HFN**
SCALE: **NTS**
DWG. #: **TLI008**
SECTION

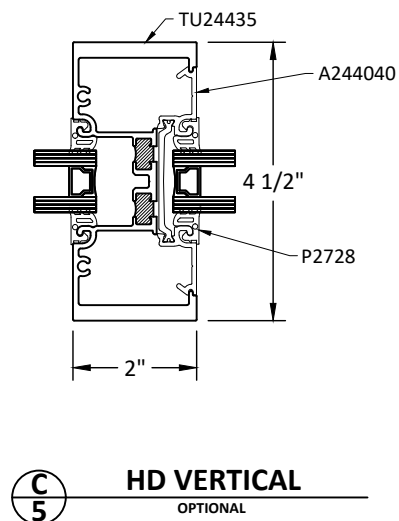
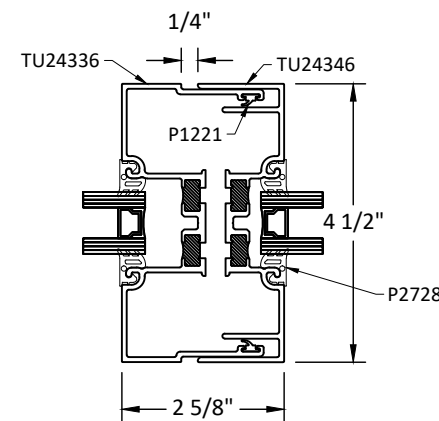
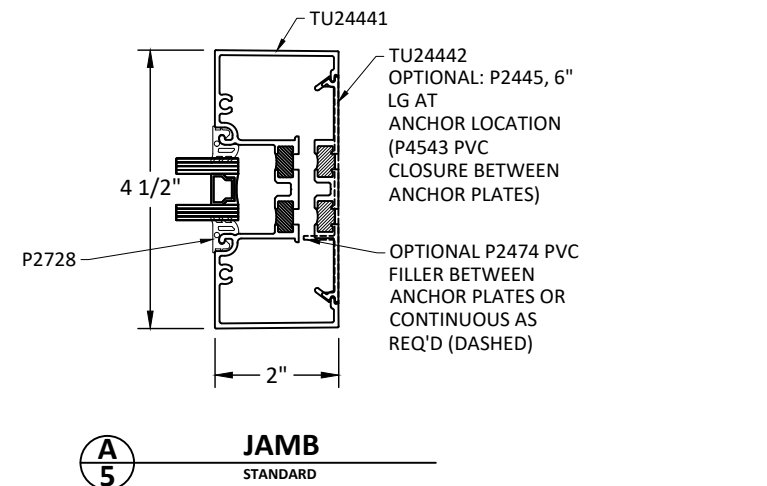
4

VERTICAL DETAILS AND DESIGN PRESSURES



| DESIGN PRESSURE TABLE - WITH DETAIL B/5 | | | | | | | | | | | | |
|---|-------|------|------|------|------|------|------|-------|------|------|------|------|
| MULLION TRIBUTARY WIDTH (INCHES) | | | | | | | | | | | | |
| MULLION SPAN (INCHES) | | 25 | 29 | 33 | 37 | 41 | 45 | 49.13 | 53 | 57 | 61 | |
| | 74 | 45.0 | 45.0 | 45.0 | 45.0 | 45.0 | 45.0 | 45.0 | 45.0 | 43.6 | 42.4 | 41.4 |
| | 84 | 45.0 | 45.0 | 45.0 | 45.0 | 42.2 | 39.7 | 37.6 | 36.1 | 34.7 | - | - |
| | 94 | 45.0 | 45.0 | 43.0 | 39.3 | 36.5 | 34.2 | 32.2 | - | - | - | - |
| | 99.13 | 45.0 | 44.8 | 40.3 | 36.8 | 34.1 | 31.9 | 30.0 | - | - | - | - |
| | 104 | 45.0 | 41.1 | 36.4 | 32.8 | 30.0 | 27.7 | - | - | - | - | - |
| | 114 | 35.7 | 31.0 | 27.5 | 24.7 | 22.5 | - | - | - | - | - | - |
| | 124 | 27.7 | 24.0 | 21.2 | 19.1 | - | - | - | - | - | - | - |
| | 134 | 21.9 | 19.0 | 16.7 | - | - | - | - | - | - | - | - |
| | 144 | 17.6 | 15.2 | 13.5 | - | - | - | - | - | - | - | - |
| | 154 | 14.4 | 12.4 | - | - | - | - | - | - | - | - | - |
| | 164 | 11.9 | 10.3 | - | - | - | - | - | - | - | - | - |
| 174 | 9.9 | - | - | - | - | - | - | - | - | - | - | |

| DESIGN PRESSURE TABLE - WITH DETAIL C/5 | | | | | | | | | | | | |
|---|-------|------|------|------|------|------|------|-------|------|------|------|------|
| MULLION TRIBUTARY WIDTH (INCHES) | | | | | | | | | | | | |
| MULLION SPAN (INCHES) | | 25 | 29 | 33 | 37 | 41 | 45 | 49.75 | 53 | 57 | 61 | |
| | 94 | 45.0 | 45.0 | 45.0 | 45.0 | 45.0 | 45.0 | 45.0 | 43.1 | 41.5 | 39.7 | 38.3 |
| | 104 | 45.0 | 45.0 | 45.0 | 45.0 | 43.3 | 40.4 | 37.7 | 36.1 | 34.5 | - | - |
| | 114 | 45.0 | 45.0 | 45.0 | 42.0 | 38.7 | 36.0 | 33.5 | 32.0 | - | - | - |
| | 124.3 | 45.0 | 45.0 | 41.7 | 37.9 | 34.9 | 32.4 | 30.0 | - | - | - | - |
| | 134 | 45.0 | 39.2 | 34.6 | 31.1 | 28.2 | 25.9 | - | - | - | - | - |
| | 144 | 36.4 | 31.5 | 27.8 | 24.9 | 22.6 | - | - | - | - | - | - |
| | 154 | 29.7 | 25.7 | 22.7 | 20.3 | - | - | - | - | - | - | - |
| | 164 | 24.6 | 21.2 | 18.7 | 16.8 | - | - | - | - | - | - | - |
| | 174 | 20.5 | 17.8 | 15.7 | - | - | - | - | - | - | - | - |
| | 184 | 17.4 | 15.0 | 13.2 | - | - | - | - | - | - | - | - |
| | 194 | 14.8 | 12.8 | - | - | - | - | - | - | - | - | - |
| 204 | 12.7 | 11.0 | - | - | - | - | - | - | - | - | - | |



TUBELITE
DEPENDABLE

LEADERS IN ECO-EFFICIENT STOREFRONT, CURTAINWALL AND ENTRANCE SYSTEMS

3056 WALKER RIDGE DRIVE N.W.
WALKER, MICHIGAN 49544
PH: 800 866 2227 FX: 616 301 0008

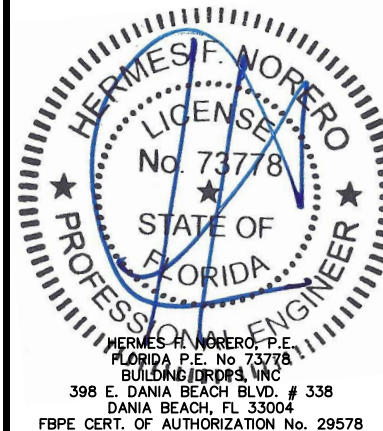
TITLE: SERIES TU24000
STOREFRONT SYSTEM
(NON-HVHZ)/(NON-IMPACT)
VERTICAL DETAILS AND DESIGN PRESSURES

PREPARED BY:
BUILDING DROPS, INC.
398 E. DANIA BEACH BLVD., STE. 338
DANIA BEACH, FL 33004
PH: (954)399-8478
FAX: (954)744-4738
WEB: www.buildingdrops.com



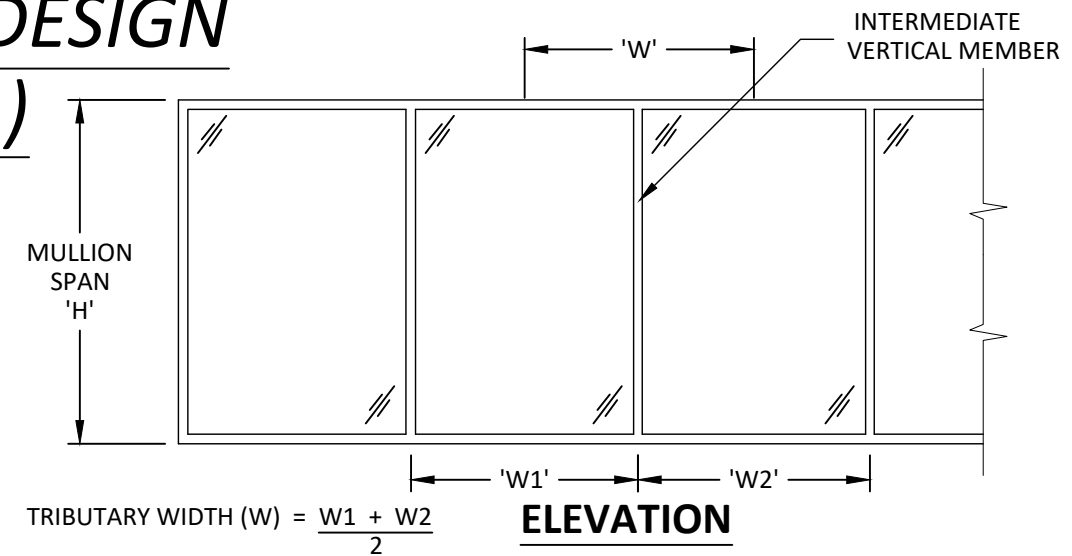
| REMARKS | BY | DATE |
|---------|----|------|
| | | |
| | | |
| | | |
| | | |

THE INSTALLATION DETAILS DESCRIBED HEREIN ARE GENERIC AND MAY NOT REFLECT ACTUAL CONDITIONS FOR A SPECIFIC SITE. IF SITE CONDITIONS CAUSE INSTALLATION TO DEVIATE FROM THE REQUIREMENTS DETAILED HEREIN, A LICENSED ENGINEER OR ARCHITECT SHALL PREPARE SITE SPECIFIC DOCUMENTS FOR USE WITH THIS DOCUMENT



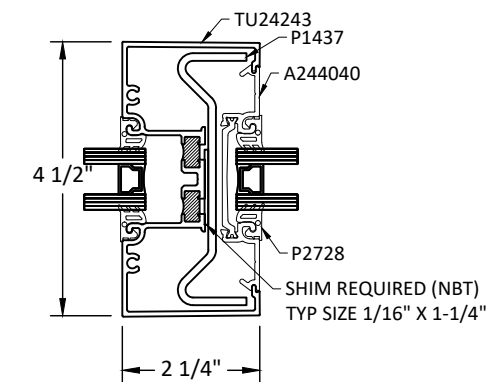
| | |
|----------|-----------------|
| FL #: | FL16539 |
| DATE: | 09.29.20 |
| DWG. BY: | LL |
| CHK. BY: | HFN |
| SCALE: | NTS |
| DWG. #: | TLI008 |
| SECTION | 5 |

VERTICAL DETAILS AND DESIGN PRESSURES (CONT.)

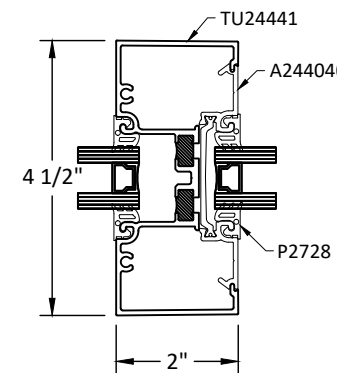


| DESIGN PRESSURE TABLE - WITH DETAIL A/6 | | | | | | | | | | | | |
|---|------|------|------|------|------|------|------|-------|------|------|------|------|
| MULLION TRIBUTARY WIDTH (INCHES) | | | | | | | | | | | | |
| MULLION SPAN (INCHES) | | 25 | 29 | 33 | 37 | 41 | 45 | 49.38 | 53 | 57 | 61 | |
| | 94 | 45.0 | 45.0 | 45.0 | 45.0 | 45.0 | 45.0 | 45.0 | 45.0 | 45.0 | 45.0 | 45.0 |
| | 104 | 45.0 | 45.0 | 45.0 | 45.0 | 45.0 | 45.0 | 45.0 | 43.0 | 41.1 | 39.4 | |
| | 114 | 45.0 | 45.0 | 45.0 | 45.0 | 45.0 | 42.9 | 40.1 | 38.1 | 36.3 | 34.7 | |
| | 124 | 45.0 | 45.0 | 45.0 | 45.0 | 41.5 | 38.6 | 36.0 | 34.1 | 32.4 | - | |
| | 134 | 45.0 | 45.0 | 45.0 | 41.4 | 38.0 | 35.2 | 32.7 | 31.0 | - | - | |
| | 144 | 45.0 | 45.0 | 42.0 | 38.1 | 34.9 | 32.3 | 30.0 | - | - | - | |
| | 154 | 45.0 | 40.4 | 35.6 | 31.9 | 29.0 | 26.6 | - | - | - | - | |
| | 164 | 38.6 | 33.4 | 29.4 | 26.4 | 23.9 | - | - | - | - | - | |
| | 174 | 32.3 | 27.9 | 24.6 | 22.0 | - | - | - | - | - | - | |
| | 184 | 27.3 | 23.6 | 20.8 | 18.6 | - | - | - | - | - | - | |
| | 194 | 23.3 | 20.1 | 17.7 | - | - | - | - | - | - | - | |
| 204 | 20.0 | 17.3 | 15.2 | - | - | - | - | - | - | - | | |

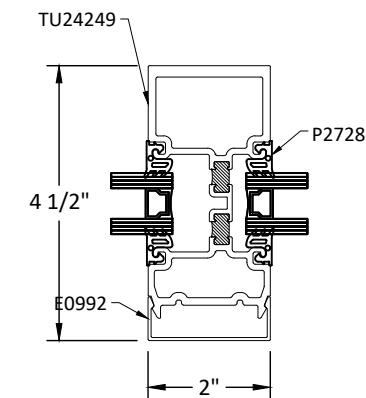
| DESIGN PRESSURE TABLE - WITH DETAILS A/5, B/6 AND C/6 | | | | | | | | | | | | |
|---|------|------|------|------|------|------|------|--------|------|------|------|------|
| MULLION TRIBUTARY WIDTH (INCHES) | | | | | | | | | | | | |
| MULLION SPAN (INCHES) | | 25 | 29 | 33 | 37 | 41 | 45 | 49.375 | 53 | 57 | 61 | |
| | 94 | 45.0 | 45.0 | 45.0 | 45.0 | 45.0 | 45.0 | 45.0 | 43.1 | 41.5 | 39.7 | 38.3 |
| | 104 | 45.0 | 45.0 | 45.0 | 45.0 | 43.3 | 40.4 | 37.7 | 36.1 | 34.5 | 39.4 | |
| | 114 | 45.0 | 45.0 | 45.0 | 42.0 | 38.7 | 36.0 | 33.5 | 32.0 | 30.8 | 29.2 | |
| | 124 | 45.0 | 43.2 | 38.2 | 34.3 | 31.2 | 28.7 | 26.4 | 24.9 | 23.4 | - | |
| | 134 | 39.6 | 34.3 | 30.3 | 27.2 | 24.7 | 22.7 | 20.9 | 19.6 | - | - | |
| | 144 | 31.8 | 27.6 | 24.3 | 21.8 | 19.8 | 18.2 | 16.7 | - | - | - | |
| | 154 | 26.0 | 22.5 | 19.9 | 17.8 | 16.1 | 14.8 | - | - | - | - | |
| | 164 | 21.5 | 18.6 | 16.4 | 14.7 | 13.3 | - | - | - | - | - | |
| | 174 | 18.0 | 15.5 | 13.7 | 12.3 | - | - | - | - | - | - | |
| | 184 | 15.2 | 13.1 | 11.6 | 10.4 | - | - | - | - | - | - | |
| | 194 | 13.0 | 11.2 | 9.9 | - | - | - | - | - | - | - | |
| 204 | 11.1 | 9.6 | 8.5 | - | - | - | - | - | - | - | | |



A VERTICAL OPTIONAL



B VERTICAL STANDARD



C SUNSHADE VERTICAL OPTIONAL

TUBELITE
DEPENDABLE

LEADERS IN ECO-EFFICIENT STOREFRONT, CURTAINWALL AND ENTRANCE SYSTEMS

3056 WALKER RIDGE DRIVE N.W.
WALKER, MICHIGAN 49544
PH: 800 866 2227 FX: 616 301 0008

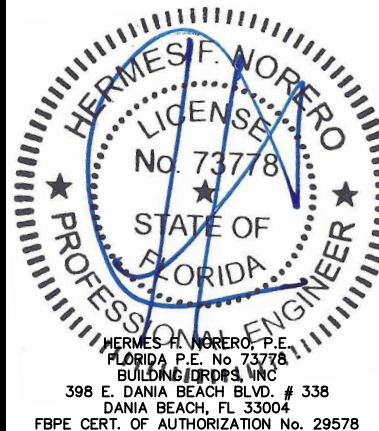
TITLE: SERIES TU24000
STOREFRONT SYSTEM
(NON-HVHZ)/(NON-IMPACT)
VERTICAL DETAILS AND DESIGN PRESSURES (CONT.)

PREPARED BY:
BUILDING DROPS, INC.
398 E. DANIA BEACH BLVD., STE. 338
DANIA BEACH, FL 33004
PH: (954)399-8478
FAX: (954)744-4738
WEB: www.buildingdrops.com



| REMARKS | BY | DATE |
|---------|----|------|
| | | |
| | | |
| | | |
| | | |

THE INSTALLATION DETAILS DESCRIBED HEREIN ARE GENERIC AND MAY NOT REFLECT ACTUAL CONDITIONS FOR A SPECIFIC SITE. IF SITE CONDITIONS CAUSE INSTALLATION TO DEVIATE FROM THE REQUIREMENTS DETAILED HEREIN, A LICENSED ENGINEER OR ARCHITECT SHALL PREPARE SITE SPECIFIC DOCUMENTS FOR USE WITH THIS DOCUMENT



FL #: **FL16539**

DATE: **09.29.20**

DWG. BY: **LL** CHK. BY: **HFN**

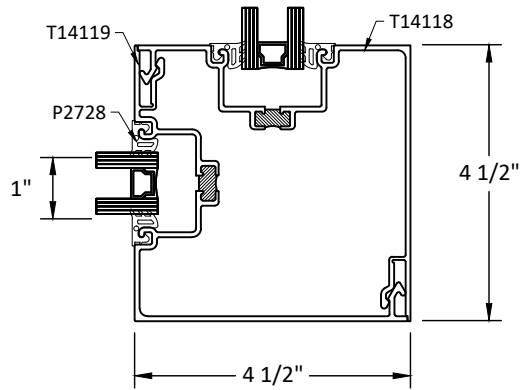
SCALE: **NTS**

DWG. #: **TLI008**

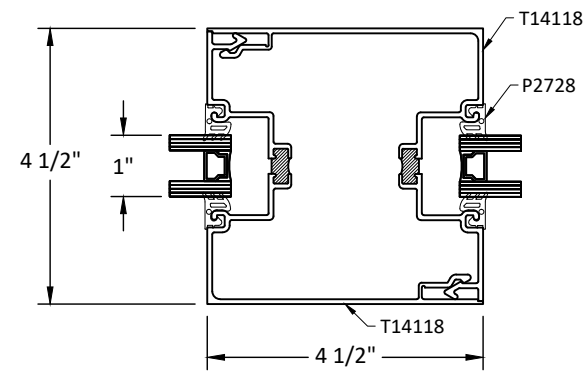
SECTION

6

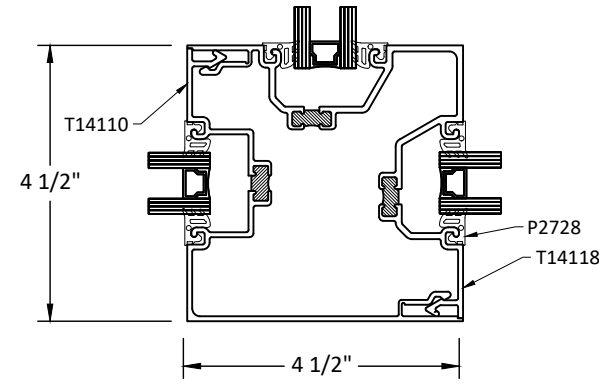
CORNER DETAILS



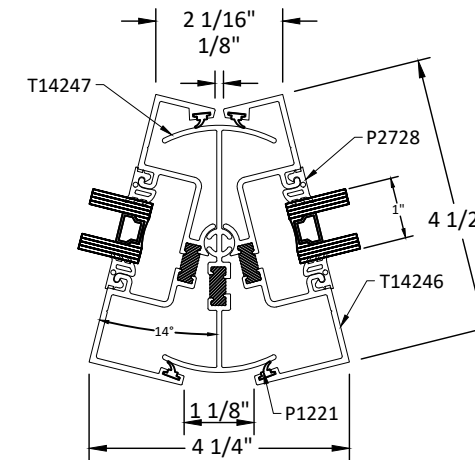
A 90° CORNER DETAIL
7



B 90° CORNER DETAIL
OPTIONAL
7



C TRI-WAY CORNER
7



D ROTATIONAL MULLION
OPTIONAL
7

NOTE:
CORNER CONDITIONS ARE
QUALIFIED FOR DESIGN PRESSURE
VALUES AND SIZES SHOWN ON
SHEET 5 & 6 FOR VERTICAL
MEMBERS WITHOUT STEEL
REINFORCEMENT

TUBELITE
DEPENDABLE
LEADERS IN ECO-EFFICIENT STOREFRONT,
CURTAINWALL AND ENTRANCE SYSTEMS

3056 WALKER RIDGE DRIVE N.W.
WALKER, MICHIGAN 49544
PH: 800 866 2227 FX: 616 301 0008

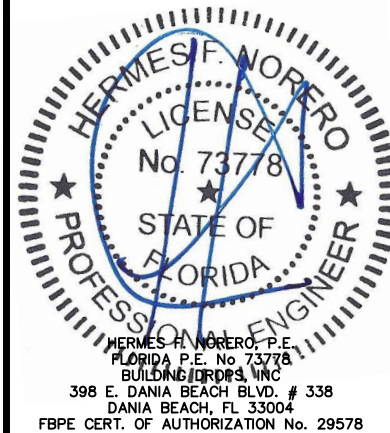
TITLE: SERIES TU24000
STOREFRONT SYSTEM
(NON-HVHZ)/(NON-IMPACT)
CORNER DETAILS

PREPARED BY:
BUILDING DROPS, INC.
398 E. DANIA BEACH BLVD., STE. 338
DANIA BEACH, FL 33004
PH: (954)399-8478
FAX: (954)744-4738
WEB: www.buildingdrops.com



| REMARKS | BY | DATE |
|---------|----|------|
| | | |
| | | |
| | | |

THE INSTALLATION DETAILS DESCRIBED HEREIN ARE GENERIC
AND MAY NOT REFLECT ACTUAL CONDITIONS FOR A SPECIFIC
SITE. IF SITE CONDITIONS CAUSE INSTALLATION TO DEVIATE
FROM THE REQUIREMENTS DETAILED HEREIN, A LICENSED
ENGINEER OR ARCHITECT SHALL PREPARE SITE SPECIFIC
DOCUMENTS FOR USE WITH THIS DOCUMENT



FL #:
FL16539

DATE: **09.29.20**

DWG. BY: **LL** CHK. BY: **HFN**

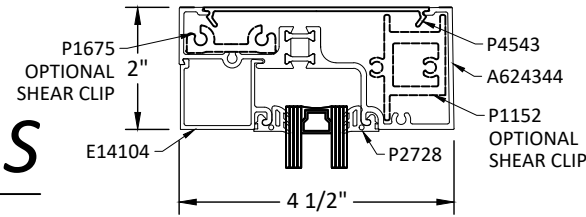
SCALE: **NTS**

DWG. #: **TLI008**

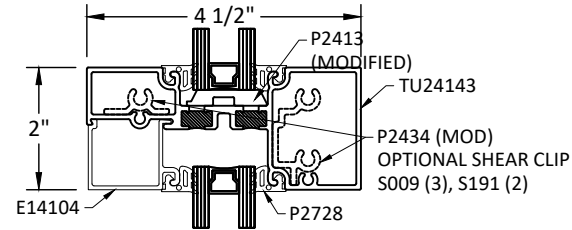
SECTION
7

DOOR DETAILS

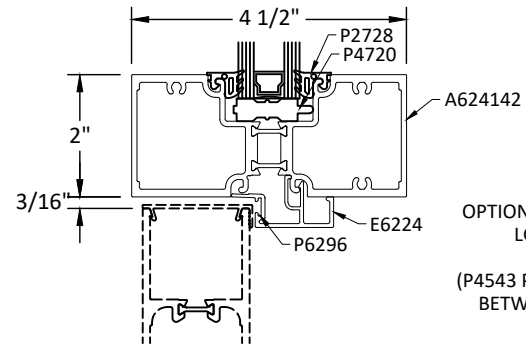
NOTE:
DOOR SYSTEMS SHOWN ARE UNDER
SEPARATE APPROVAL



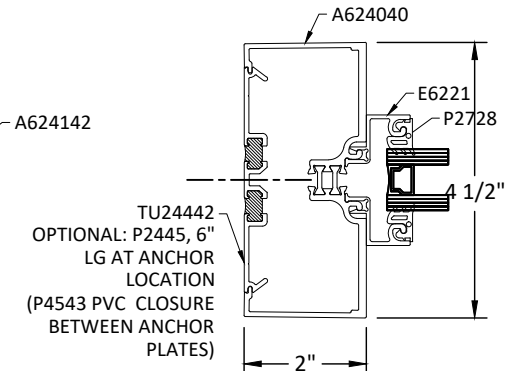
A
8 HEAD STANDARD



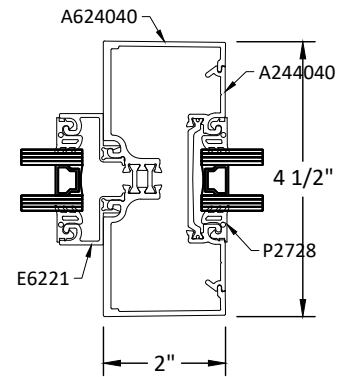
B
8 TRANSOM



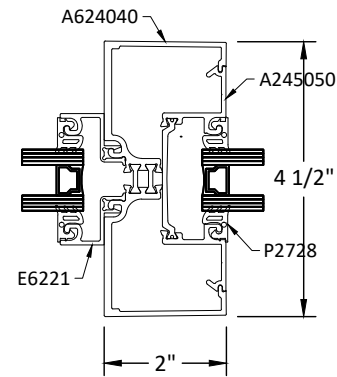
C
8 DOOR HEADER
STANDARD



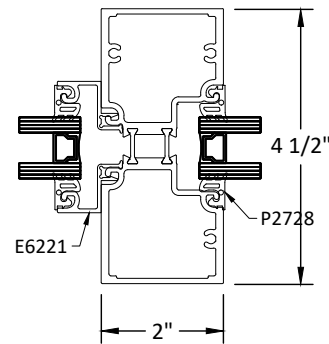
D
8 DOOR JAMB



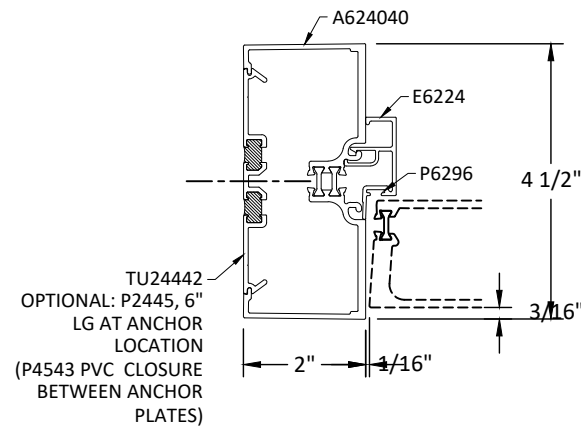
E
8 TRANSOM JAMB



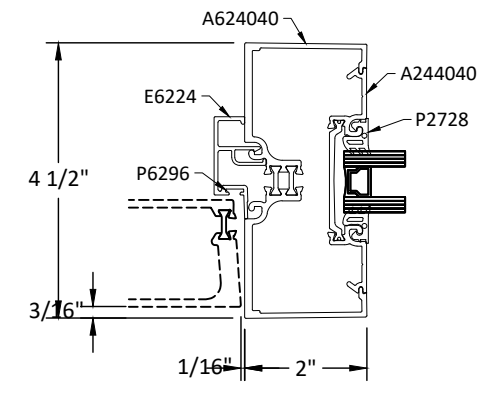
F
8 TRANSOM JAMB
OPTIONAL



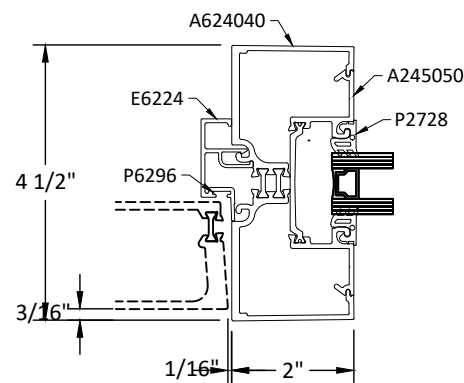
G
8 TRANSOM JAMB
OPTIONAL



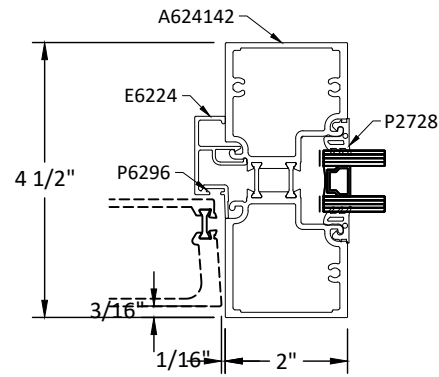
H
8 DOOR JAMB



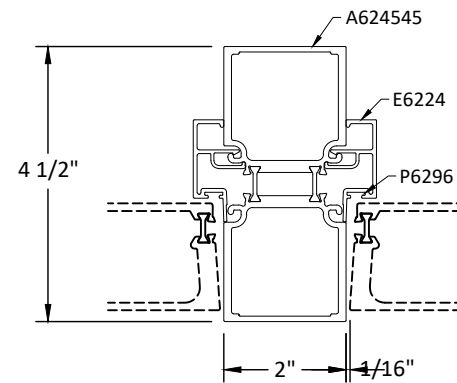
I
8 DOOR JAMB
OPTIONAL



J
8 DOOR JAMB



K
8 DOOR JAMB



L
8 DOOR JAMB
INTERMEDIATE

TUBELITE
DEPENDABLE

LEADERS IN ECO-EFFICIENT STOREFRONT,
CURTAINWALL AND ENTRANCE SYSTEMS

3056 WALKER RIDGE DRIVE N.W.
WALKER, MICHIGAN 49544
PH: 800 866 2227 FX: 616 301 0008

TITLE: SERIES TU24000
STOREFRONT SYSTEM
(NON-HVHZ)/(NON-IMPACT)

DOOR DETAILS

PREPARED BY: BUILDING DROPS, INC.

398 E. DANIA BEACH BLVD., STE. 338
DANIA BEACH, FL 33004
PH: (954)399-8478
FAX: (954)744-4738
WEB: www.buildingdrops.com



| REMARKS | BY | DATE |
|---------|----|------|
| | | |
| | | |
| | | |

THE INSTALLATION DETAILS DESCRIBED HEREIN ARE GENERIC AND MAY NOT REFLECT ACTUAL CONDITIONS FOR A SPECIFIC SITE. IF SITE CONDITIONS CAUSE INSTALLATION TO DEVIATE FROM THE REQUIREMENTS DETAILED HEREIN, A LICENSED ENGINEER OR ARCHITECT SHALL PREPARE SITE SPECIFIC DOCUMENTS FOR USE WITH THIS DOCUMENT



HERMES F. NORERO, P.E.
FLORIDA P.E. No. 73778
BUILDING DROPS, INC.
398 E. DANIA BEACH BLVD. # 338
DANIA BEACH, FL 33004
FBPE CERT. OF AUTHORIZATION No. 29578

FL #: FL16539

DATE: 09.29.20

DWG. BY: LL CHK. BY: HFN

SCALE: NTS

DWG. #: TLI008

SECTION



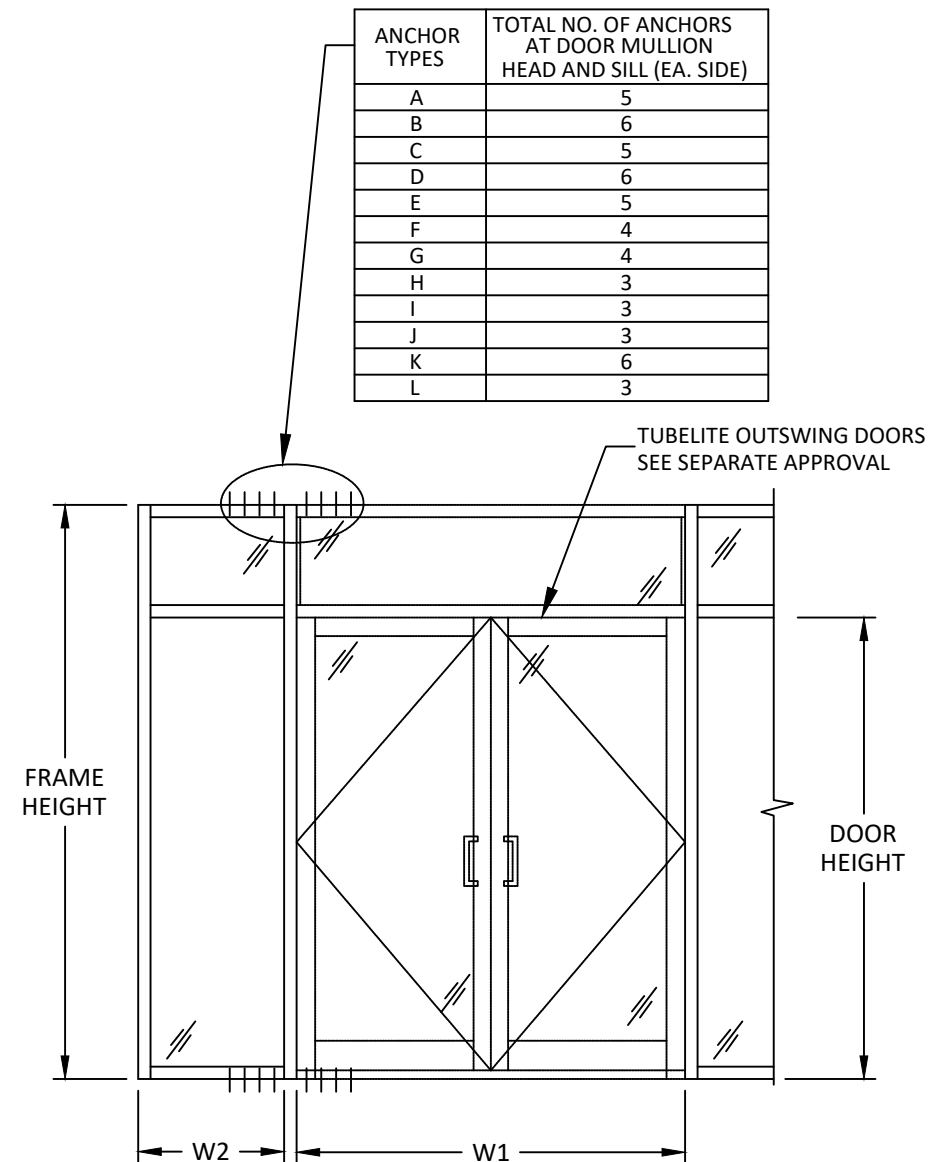
DOOR MULLION DESIGN PRESSURE TABLES

TUBELITE
 DEPENDABLE
 LEADERS IN ECO-EFFICIENT STOREFRONT,
 CURTAINWALL AND ENTRANCE SYSTEMS

3056 WALKER RIDGE DRIVE N.W.
 WALKER, MICHIGAN 49544
 PH: 800 866 2227 FX: 616 301 0008

| DOUBLE DOOR MULLION WITH TRANSOM LOAD CAPACITY | | | | |
|--|----------------------|---------------------|----------------------|----------------------|
| NOMINAL DIMS. (IN) | | | LOADS - PSF | |
| FRAME HEIGHT | DOOR LEAF WIDTH (W1) | SIDELITE WIDTH (W2) | EXT. (+) INT. (-) | EXT. (+) INT. (-) |
| | | | WITH STEEL REINF. | WITHOUT STEEL REINF. |
| 96 | 60.625 | 26.625 | 45.0 | 41.2 |
| | | 34.125 | 45.0 | 39.2 |
| | | 41.625 | 45.0 | 37.4 |
| | | 49.125 | 45.0 | 35.8 |
| | | 56.625 | 45.0 | 34.3 |
| | 66.625 | 26.625 | 45.0 | 38.1 |
| | | 34.125 | 45.0 | 36.4 |
| | | 41.625 | 45.0 | 34.9 |
| | | 49.125 | 45.0 | 33.4 |
| | | 56.625 | 45.0 | 32.1 |
| | 72.625 | 26.625 | 45.0 | 35.5 |
| | | 34.125 | 45.0 | 34.0 |
| 41.625 | | 45.0 | 32.6 | |
| 49.125 | | 45.0 | 31.4 | |
| 56.625 | | 43.3 | 30.2 | |
| 100.38 | 60.625 | 26.625 | 45.0 | 39.4 |
| | | 34.125 | 45.0 | 37.5 |
| | | 41.625 | 45.0 | 35.8 |
| | | 49.125 | 45.0 | 34.2 |
| | | 56.625 | 45.0 | 32.8 |
| | 66.625 | 26.625 | 45.0 | 36.5 |
| | | 34.125 | 45.0 | 34.8 |
| | | 41.625 | 45.0 | 33.3 |
| | | 49.125 | 45.0 | 32.0 |
| | | 56.625 | 44.1 | 30.7 |
| | 72.625 | 26.625 | 45.0 | 33.9 |
| | | 34.125 | 45.0 | 32.5 |
| 41.625 | | 44.8 | 31.2 | |
| 49.125 | | 43.0 | 30.0 | |
| 56.625 | | 41.4 | - | |

| DOUBLE DOOR MULLION WITH TRANSOM LOAD CAPACITY | | | | |
|--|----------------------|---------------------|----------------------|----------------------|
| NOMINAL DIMS. (IN) | | | LOADS - PSF | |
| FRAME HEIGHT | DOOR LEAF WIDTH (W1) | SIDELITE WIDTH (W2) | EXT. (+) INT. (-) | EXT. (+) INT. (-) |
| | | | WITH STEEL REINF. | WITHOUT STEEL REINF. |
| 112 | 60.625 | 26.625 | 45.0 | 28.4 |
| | | 34.125 | 45.0 | 27.0 |
| | | 41.625 | 45.0 | 25.8 |
| | | 49.125 | 44.0 | 24.6 |
| | | 56.625 | 42.1 | - |
| | 66.625 | 26.625 | 45.0 | 26.3 |
| | | 34.125 | 44.8 | 25.1 |
| | | 41.625 | 42.9 | - |
| | | 49.125 | 41.1 | - |
| | | 56.625 | 39.5 | - |
| | 72.625 | 26.625 | 43.6 | 24.4 |
| | | 34.125 | 41.8 | - |
| 41.625 | | 40.1 | - | |
| 49.125 | | 38.6 | - | |
| 56.625 | | 37.1 | - | |
| 120 | 60.625 | 26.625 | 45.0 | 23.1 |
| | | 34.125 | 45.0 | 22.0 |
| | | 41.625 | 43.0 | - |
| | | 49.125 | 41.1 | - |
| | | 56.625 | 39.3 | - |
| | 66.625 | 26.625 | 43.8 | 21.3 |
| | | 34.125 | 41.8 | - |
| | | 41.625 | 40.0 | - |
| | | 49.125 | 38.4 | - |
| | | 56.625 | 36.9 | - |
| | 72.625 | 26.625 | 40.7 | - |
| | | 34.125 | 39.0 | - |
| 41.625 | | 37.4 | - | |
| 49.125 | | 36.0 | - | |
| 56.625 | | 34.7 | - | |



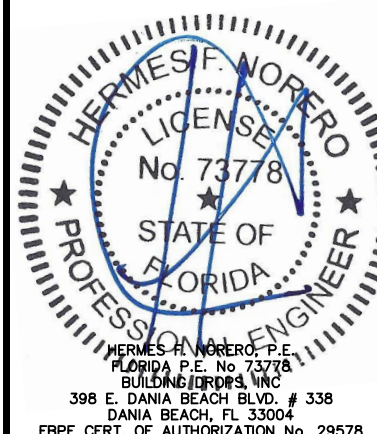
DOUBLE DOOR WITH TRANSOM

TITLE: SERIES TU24000
 STOREFRONT SYSTEM
 (NON-HVHZ)/(NON-IMPACT)
 DOOR MULLION DESIGN
 PRESSURE TABLES

PREPARED BY:
BUILDING DROPS, INC.
 398 E. DANIA BEACH BLVD., STE. 338
 DANIA BEACH, FL 33004
 PH: (954) 999-8478
 FAX: (954) 744-4738
 WEB: www.buildingdrops.com

| REMARKS | BY | DATE |
|---------|----|------|
| | | |
| | | |
| | | |
| | | |

THE INSTALLATION DETAILS DESCRIBED HEREIN ARE GENERIC AND MAY NOT REFLECT ACTUAL CONDITIONS FOR A SPECIFIC SITE. IF SITE CONDITIONS CAUSE INSTALLATION TO DEVIATE FROM THE REQUIREMENTS DETAILED HEREIN, A LICENSED ENGINEER OR ARCHITECT SHALL PREPARE SITE SPECIFIC DOCUMENTS FOR USE WITH THIS DOCUMENT



FL #: **FL16539**

DATE: **09.29.20**

DWG. BY: **LL** | CHK. BY: **HFN**

SCALE: **NTS**

DWG. #: **TLI008**

SECTION **9**

OF 11

12/20/2020 7:31 PM
 c:\users\p50\onedrive - building drops, inc.\tl008 2020-12-20.dwg

DOOR MULLION DESIGN PRESSURE TABLES (CONT.)

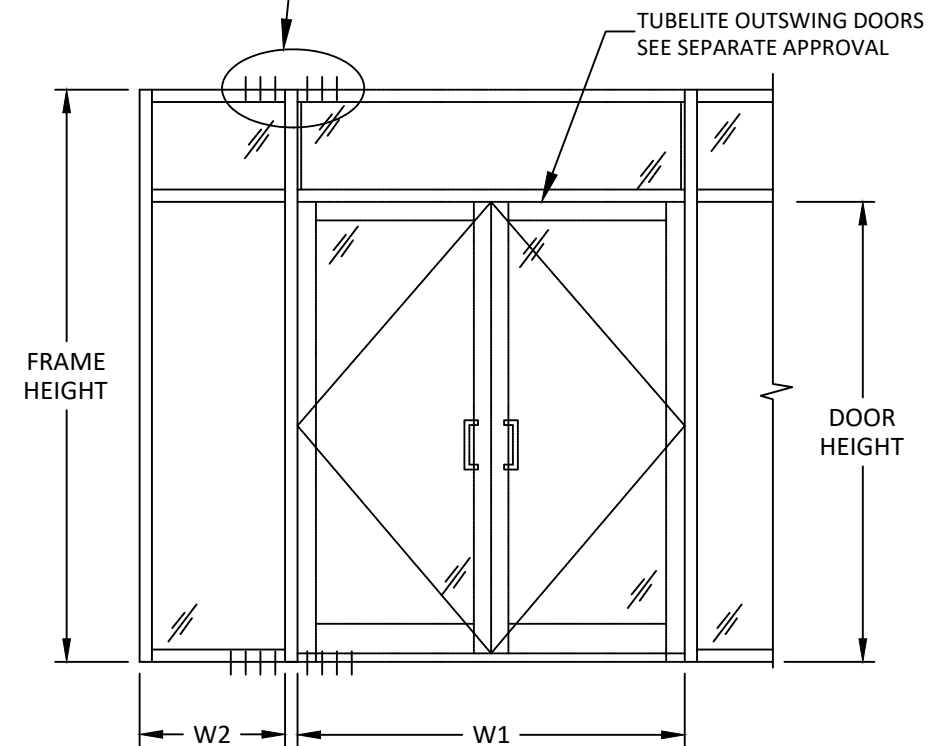
TUBELITE
 DEPENDABLE
 LEADERS IN ECO-EFFICIENT STOREFRONT,
 CURTAINWALL AND ENTRANCE SYSTEMS

3056 WALKER RIDGE DRIVE N.W.
 WALKER, MICHIGAN 49544
 PH: 800 866 2227 FX: 616 301 0008

| DOUBLE DOOR MULLION WITH TRANSOM LOAD CAPACITY | | | | |
|--|----------------------|---------------------|----------------------|----------------------|
| NOMINAL DIMS. (IN) | | | LOADS - PSF | |
| FRAME HEIGHT | DOOR LEAF WIDTH (W1) | SIDELITE WIDTH (W2) | EXT. (+) INT. (-) | EXT. (+) INT. (-) |
| | | | WITH STEEL REINF. | WITHOUT STEEL REINF. |
| 128 | 60.625 | 26.625 | 44.4 | 19.0 |
| | | 34.125 | 42.2 | - |
| | | 41.625 | 40.3 | - |
| | | 49.125 | 38.5 | - |
| | | 56.625 | 36.9 | - |
| | 66.625 | 26.625 | 41.0 | - |
| | | 34.125 | 39.2 | - |
| | | 41.625 | 37.5 | - |
| | | 49.125 | 36.0 | - |
| | | 56.625 | 34.5 | - |
| | 72.625 | 26.625 | 38.2 | - |
| | | 34.125 | 36.6 | - |
| 41.625 | | 35.1 | - | |
| 49.125 | | 33.8 | - | |
| 56.625 | | 32.5 | - | |
| 136 | 60.625 | 26.625 | 41.8 | - |
| | | 34.125 | 39.7 | - |
| | | 41.625 | 37.9 | - |
| | | 49.125 | 36.2 | - |
| | | 56.625 | 34.7 | - |
| | 66.625 | 26.625 | 38.6 | - |
| | | 34.125 | 36.9 | - |
| | | 41.625 | 35.3 | - |
| | | 49.125 | 33.9 | - |
| | | 56.625 | 32.5 | - |
| | 72.625 | 26.625 | 35.9 | - |
| | | 34.125 | 34.4 | - |
| 41.625 | | 33.0 | - | |
| 49.125 | | 31.8 | - | |
| 56.625 | | 30.6 | - | |

| DOUBLE DOOR MULLION WITH TRANSOM LOAD CAPACITY | | | | |
|--|----------------------|---------------------|----------------------|----------------------|
| NOMINAL DIMS. (IN) | | | LOADS - PSF | |
| FRAME HEIGHT | DOOR LEAF WIDTH (W1) | SIDELITE WIDTH (W2) | EXT. (+) INT. (-) | EXT. (+) INT. (-) |
| | | | WITH STEEL REINF. | WITHOUT STEEL REINF. |
| 144 | 60.625 | 26.625 | 39.4 | - |
| | | 34.125 | 37.5 | - |
| | | 41.625 | 35.8 | - |
| | | 49.125 | 34.2 | - |
| | | 56.625 | 32.8 | - |
| | 66.625 | 26.625 | 36.5 | - |
| | | 34.125 | 34.8 | - |
| | | 41.625 | 33.3 | - |
| | | 49.125 | 32.0 | - |
| | | 56.625 | 30.7 | - |
| | 72.625 | 26.625 | 33.9 | - |
| | | 34.125 | 32.5 | - |
| 41.625 | | 31.2 | - | |
| 49.125 | | 30.0 | - | |
| 56.625 | | 28.7 | - | |
| 152 | 60.625 | 26.625 | 33.5 | - |
| | | 34.125 | 31.9 | - |
| | | 41.625 | 30.4 | - |
| | | 49.125 | 29.1 | - |
| | | 56.625 | 27.9 | - |
| | 66.625 | 26.625 | 31.0 | - |
| | | 34.125 | 29.6 | - |
| | | 41.625 | 28.4 | - |
| | | 49.125 | 27.2 | - |
| | | 56.625 | 26.0 | - |
| | 72.625 | 26.625 | 28.8 | - |
| | | 34.125 | 27.6 | - |
| 41.625 | | 26.1 | - | |
| 49.125 | | 25.0 | - | |
| 56.625 | | 23.8 | - | |
| 160 | 60.625 | 26.625 | 28.7 | - |
| | | 34.125 | 27.4 | - |
| | | 41.625 | 26.1 | - |
| | | 49.125 | 25.0 | - |
| | | 56.625 | 23.8 | - |

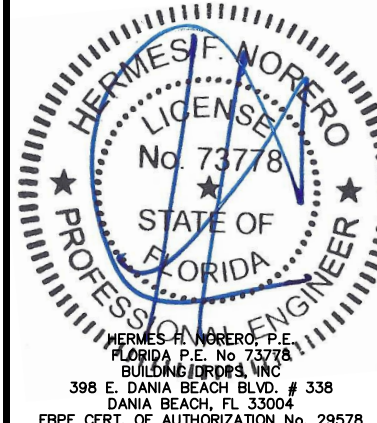
| ANCHOR TYPES | TOTAL NO. OF ANCHORS AT DOOR MULLION HEAD AND SILL (EA. SIDE) |
|--------------|---|
| A | 5 |
| B | 6 |
| C | 5 |
| D | 6 |
| E | 5 |
| F | 4 |
| G | 4 |
| H | 3 |
| I | 3 |
| J | 3 |
| K | 6 |
| L | 3 |



DOUBLE DOOR WITH TRANSOM

| REMARKS | BY | DATE |
|---------|----|------|
| | | |
| | | |
| | | |
| | | |

THE INSTALLATION DETAILS DESCRIBED HEREIN ARE GENERIC AND MAY NOT REFLECT ACTUAL CONDITIONS FOR A SPECIFIC SITE. IF SITE CONDITIONS CAUSE INSTALLATION TO DEVIATE FROM THE REQUIREMENTS DETAILED HEREIN, A LICENSED ENGINEER OR ARCHITECT SHALL PREPARE SITE SPECIFIC DOCUMENTS FOR USE WITH THIS DOCUMENT



FL #:

FL16539

DATE: **09.29.20**

DWG. BY: **LL** | CHK. BY: **HFN**

SCALE: **NTS**

DWG. #: **TLI008**

SECTION

10

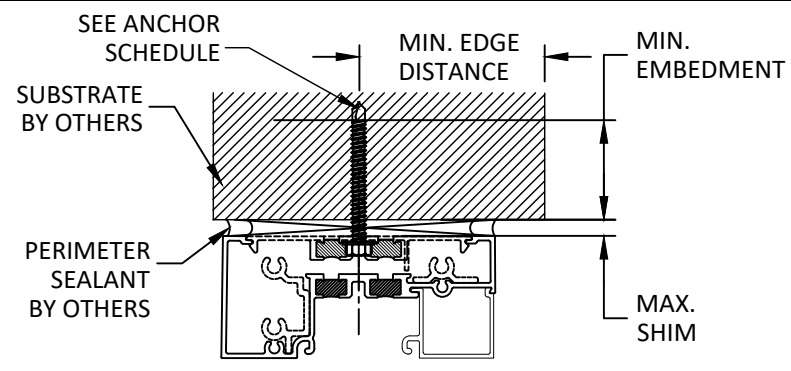
OF 11

TITLE: **SERIES TU24000 STOREFRONT SYSTEM (NON-HVHZ)/(NON-IMPACT) DOOR MULLION DESIGN PRESSURE TABLES (CONT.)**

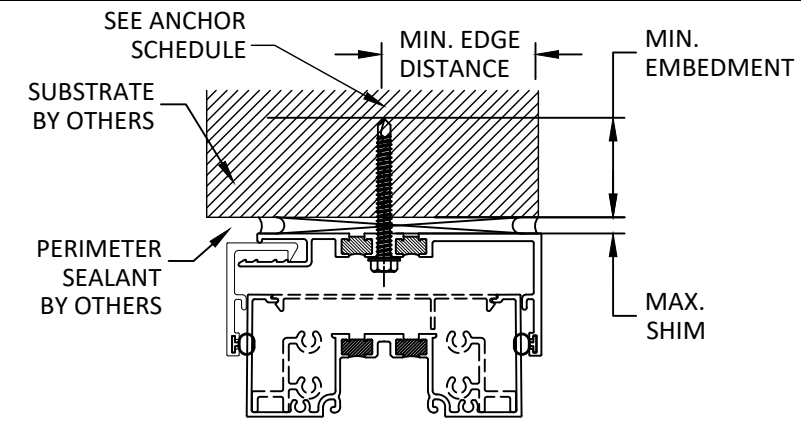
PREPARED BY: **BUILDING DROPS, INC.**
 398 E. DANIA BEACH BLVD., STE. 338
 DANIA BEACH, FL 33004
 PH: (954)399-8478
 FAX: (954)744-4738
 WEB: www.buildingdrops.com

12/20/2020 7:31 PM
 c:\users\p50\onedrive - building drops, inc.\tl008 2020-12-20.dwg

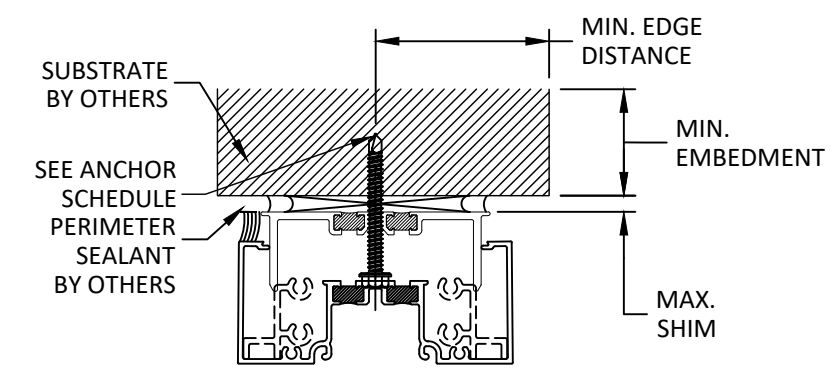
12/20/2020 7:31 PM



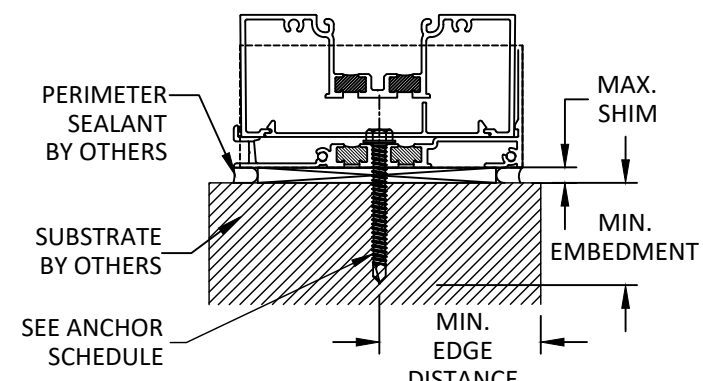
A
11 ANCHOR DETAIL
HEAD



B
11 ANCHOR DETAIL
HEAD



C
11 ANCHOR DETAIL
HEAD



D
11 ANCHOR DETAIL
SILL

NOTE:
JAMB HAVE SIMILAR DETAILS

INSTALLATION NOTES:

- *FOR STEEL AND ALUMINUM, ANCHOR SHALL BE OF SUFFICIENT LENGTH TO ACHIEVE 3 THREADS OF PENETRATION BEYOND THE WALL OF THE METAL.
- ONE (1) INSTALLATION ANCHOR IS REQUIRED AT EACH ANCHOR LOCATION SHOWN.
- THE NUMBER OF INSTALLATION ANCHORS DEPICTED IS THE MINIMUM NUMBER OF ANCHORS TO BE USED FOR PRODUCT INSTALLATION.
- INSTALL INDIVIDUAL INSTALLATION ANCHORS WITHIN A TOLERANCE OF ±1/2 INCH OF THE DEPICTED LOCATION IN THE ANCHOR LAYOUT DETAIL (I.E., WITHOUT CONSIDERATION OF TOLERANCES). TOLERANCES ARE NOT CUMULATIVE FROM ONE INSTALLATION ANCHOR TO THE NEXT.
- SHIM AS REQUIRED AT EACH INSTALLATION ANCHOR WITH LOAD BEARING SHIM(S). MAXIMUM ALLOWABLE SHIM STACK TO BE 1/2 INCH. SHIM WHERE SPACE OF 1/16 INCH OR GREATER OCCURS. SHIM(S) SHALL BE CONSTRUCTED OF HIGH DENSITY PLASTIC OR BETTER.
- MINIMUM EMBEDMENT AND EDGE DISTANCE EXCLUDE WALL FINISHES, INCLUDING BUT NOT LIMITED TO STUCCO, FOAM, BRICK VENEER, AND SIDING.
- INSTALLATION ANCHORS AND ASSOCIATED HARDWARE MUST BE MADE OF CORROSION RESISTANT MATERIAL OR HAVE A CORROSION RESISTANT COATING.
- INSTALLATION ANCHORS SHALL BE INSTALLED IN ACCORDANCE WITH ANCHOR MANUFACTURER'S INSTALLATION INSTRUCTIONS, AND ANCHORS SHALL NOT BE USED IN SUBSTRATES WITH STRENGTHS LESS THAN THE MINIMUM STRENGTH SPECIFIED BY THE ANCHOR MANUFACTURER.

| ANCHOR SCHEDULE | | | | | |
|-----------------|---|---|----------------|--------------------|----------------|
| TYPE | ANCHOR | SUBSTRATE | MIN. EMBEDMENT | MIN. EDGE DISTANCE | MAX. SHIM SIZE |
| A | 1/4" ELCO ULTRACON (CARBON STEEL) | 3000 PSI CONCRETE MIN. OR GROUT FILLED CMU PER ASTM C-90 W/ MIN. F'C=2000 PSI | 1.75" | 2.5" | 0.50" |
| B | 1/4" ITW TAPCON (CARBON OR STAINLESS STEEL) | | 1.75" | 2.5" | 0.50" |
| C | 1/4" HILTI KWIK-CON II+ (CARBON OR STAINLESS STEEL) | | 1" | 2.5" | 0.50" |
| D | #14 WOOD SCREW | 2X WOOD MIN. S.G.=0.55 | 1.5" | 1" | 0.50" |
| E | 1/4" GR. 5 SELF-TAPPING/DRILLING SCREW | MIN. 18 GA STEEL STUD (0.0478") 33 KSI OR MIN. 0.090" 6063-T5 ALUMINUM | 3 THREADS* | 1" | 0.50" |
| F | 3/8" POWERS TAPPER (CARBON STEEL) | 3000 PSI CONCRETE MIN. | 1.25" | 2.5" | 0.50" |
| G | 3/8" POWERS TAPPER (CARBON STEEL) | GROUT FILLED CMU PER ASTM C-90. MIN. F'C=2000 PSI | 1.75" | 3" | 0.50" |
| H | 3/8" ITW LDT (CARBON STEEL) | 3000 PSI CONCRETE MIN. | 1.5" | 2.5" | 0.50" |
| I | 3/8" ITW LDT (CARBON STEEL) | GROUT FILLED CMU PER ASTM C-90. MIN. F'C=2000 PSI | 1.5" | 3" | 0.50" |
| J | 3/8" ITW TRUBOLT WEDGE (CARBON STEEL OR SS) | 2000 PSI CONCRETE MIN. | 1.5" | 2.5" | 0.50" |
| K | 3/8" LAG SCREW | 2X WOOD MIN. S.G.=0.55 | 1.5" | 1.5" | 0.50" |
| L | 5/16" GR. 5 SELF-TAPPING/DRILLING SCREW | MIN. 18 GA STEEL STUD (0.0478") 33 KSI OR MIN. 0.090" 6063-T5 ALUMINUM | 3 THREADS* | 1" | 0.50" |

TUBELITE
DEPENDABLE
LEADERS IN ECO-EFFICIENT STOREFRONT, CURTAINWALL AND ENTRANCE SYSTEMS

3056 WALKER RIDGE DRIVE N.W.
WALKER, MICHIGAN 49544
PH: 800 866 2227 FX: 616 301 0008

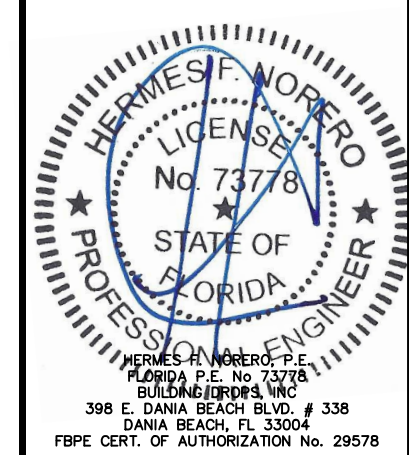
TITLE: SERIES TU24000
STOREFRONT SYSTEM
(NON-HVHZ)/(NON-IMPACT)
ANCHOR DETAILS, SCHEDULE
& INSTALLATION NOTES

PREPARED BY:
BUILDING DROPS, INC.
398 E. DANIA BEACH BLVD., STE. 338
DANIA BEACH, FL 33004
PH: (954)399-8478
FAX: (954)744-4738
WEB: www.buildingdrops.com



| REMARKS | BY | DATE |
|---------|----|------|
| | | |
| | | |
| | | |

THE INSTALLATION DETAILS DESCRIBED HEREIN ARE GENERIC AND MAY NOT REFLECT ACTUAL CONDITIONS FOR A SPECIFIC SITE. IF SITE CONDITIONS CAUSE INSTALLATION TO DEVIATE FROM THE REQUIREMENTS DETAILED HEREIN, A LICENSED ENGINEER OR ARCHITECT SHALL PREPARE SITE SPECIFIC DOCUMENTS FOR USE WITH THIS DOCUMENT



FL #: **FL16539**

DATE: **09.29.20**

DWG. BY: **LL** CHK. BY: **HFN**

SCALE: **NTS**

DWG. #: **TLI008**

SECTION **11**

c:\users\p50\onedrive - building drops, inc.\1008 2020-12-20.dwg